

the new



EVOLVE X

by INMODE



TITE | TONE | TRANSFORM
TOTAL BODY TRANSFORMATION

*Hands-Free Body Sculpting
and Muscle Toning Technology*



NON-INVASIVE, HANDS-FREE SKIN REMODELING, FAT TREATMENT & MUSCLE TONING TRANSFORMED



EvolveX is the ultimate hands-free platform **transforming total body contouring** and taking it to the next level. Post-lockdown, patients continue to seek non-invasive treatments at unprecedented levels, pursuing non-excisional alternatives to remodel skin, treat fat, sculpt abdomens, lift buttocks, and tone hips.

EvolveX is the only all-in-one system equipped with three clinically proven technologies:

- » **Tite (Bipolar RF)**
- » **Tone (EMS)**
- » **Transform (Bipolar RF + EMS)**

Procedures can be combined to deliver **synergistic layering treatments** to produce consistent transformative results that **remodel skin, target adipose tissue, and tone muscles.**

The versatility of EvolveX multi-modalities allows for **customizable and repeatable combination treatment plans** to meet patient demand for nonsurgical, zero downtime procedures. The hands-free design and intelligent programmable technology make EvolveX the ideal **social distancing device**, allowing for a reduction in patient-physician face-to-face contact during procedures.

Ensure your practice maximizes its share of the growing body sculpting trend with EvolveX.

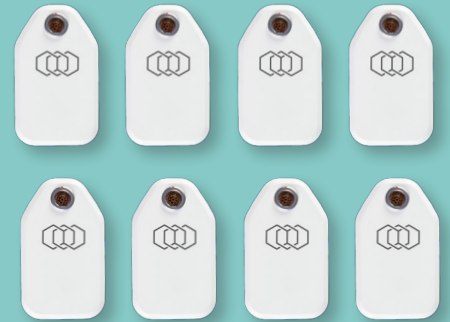
EVOLVE TITE

HANDS-FREE SKIN REMODELING TREATMENT

Evolve Tite deploys bipolar radiofrequency (RF) energy to the Fibroseptal Network (FSN) to remodel skin and improve its appearance. The 8 hands-free applicators deliver uniform and volumetric bulk heating to the dermal and subdermal layer for circumferential reduction and tissue remodeling.

Evolve's proprietary algorithm provides unprecedented safety. RF energy is automatically adjusted when each applicator senses it has reached the optimal thermal response.

Smart RF thermistors on each applicator are programmed to maintain therapeutic skin contraction temperatures while detecting temperature fluctuations and adjusting accordingly to ensure the delivery of consistent bulk heating. Maintaining optimal therapeutic temperatures stimulates neocollagenesis.



EVOLVE TONE

HANDS-FREE MUSCLE TONING TREATMENT

Evolve Tone is a non-invasive muscle strengthening technology that emits low frequency electrical pulses (electrical muscle stimulation or EMS) to induce involuntary muscle contractions. EMS optimizes cellular metabolism and the regeneration of muscle fibers resulting in a more toned appearance.

Patients rest comfortably while Tone targets specific muscle groups to increase muscle strength and refine the look of muscles without downtime.

Tone's 4 hands-free applicators allow multiple body areas to be treated simultaneously, so your practice can deliver customized patient treatments. Provide your patients with the ultimate in tailored body treatments.



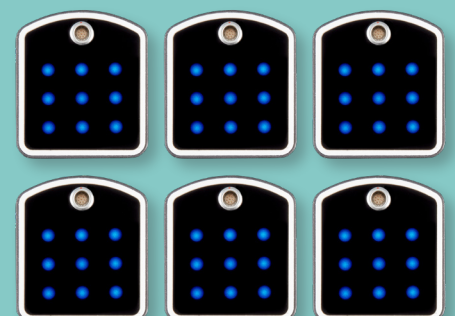
EVOLVE TRANSFORM

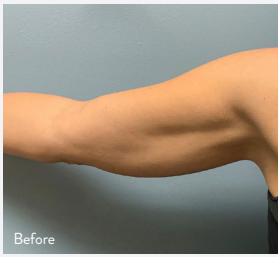
HANDS-FREE TOTAL BODY TISSUE, FAT, & MUSCLE TRANSFORMING TREATMENT

Evolve Transform provides two procedures in one visit. Bipolar radiofrequency energy (RF) for deep heating of dermal and adipose tissue, plus electrical muscle stimulation (EMS) alternate to deliver a synergistic layering treatment that produces consistent transformative results.

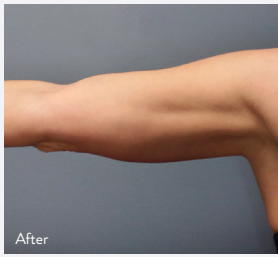
Transform's 6 hands-free applicators distribute RF energy heat to the fibroseptal network and adipose tissue, while EMS induces forced muscle contractions that are not achievable during workouts.

Transform reinvents body sculpting and muscle toning, delivering highly efficacious, no downtime treatments for all body types.





Before

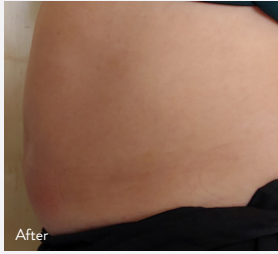


After

DR. D. KIBA



Before



After

DR. H. ROBERTS

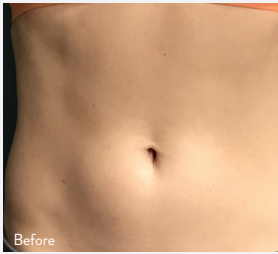


Before

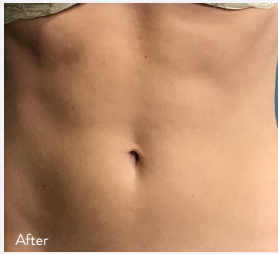


After

DR. M. CRAIG



Before



After

DR. J. STUBBS



ENHANCED SAFETY PROFILE THROUGH INTELLIGENT PROGRAMMABLE TECHNOLOGY

- » Built-in visual indicators illuminate as each applicator reaches the optimal setting, providing updates on treatment progress.
- » EvolveX LCD treatment screen enables physicians to visually monitor the effect of each applicator at any point during the procedure.
- » EvolveX RF and EMS technologies can be safely and effectively used on all skin types.
- » EvolveX is designed with a patient call button to allow clients to easily pause treatments and have clinic staff make adjustments if required.

Power Output:	Up to 50 W
Output Frequency:	1 MHz
Temperature Cut-Off:	Real time temperature monitoring for all active applicators. Operator selectable up to 43°C
Tailored Treatment Times:	5 minute increments allow procedures to be completely customized to specific patient needs



MAXIMIZE YOUR REVENUE & BOTTOM LINE

- » The hands-free design and programmable technology of EvolveX allow your practice to reallocate physician and clinician time to other patients and treatments while EvolveX is in use.
- » EvolveX expands your practice by delivering combination treatment plans to a broad range of patients. With EvolveX, you have the flexibility to provide customized, repeatable procedures generating a recurring revenue stream.
- » Three efficacious technologies with no consumables maximize practice profitability.

TRANSFORM EVERY BODY TYPE WITH EVOLVE X



ECTOMORPH



MESOMORPH



ENDOMORPH



info@dansysgroup.com | www.dansys.com

FOLLOW US

dansysmedical

Dansys

Dansys

Dansys Medical